



 [facebook.com/RMALaboratory](https://www.facebook.com/RMALaboratory)

 [@RMALab](https://twitter.com/RMALab)

[www.rmalab.com](http://www.rmalab.com)

V.4 | MARCH 2019 FOOD SENSITIVITY FACTS



[www.rmalab.com](http://www.rmalab.com)







## REFERENCES

1. Sicherer SH, Sampson HA. "Food Allergy." *J Allergy Clin Immunol*. Vol. 125.No. 2 (2010): 5116-125.
2. Gocki J, Bartuzi Z. "Role of immunoglobulin G antibodies in diagnosis of food allergy." *Adv Dermatol Allergol* Vol.33 No.4 (2016): 253-56.
3. Janeaway, CA Jr, Traver P, Walport M et al. *Immunobiology: The Immune System in Health and Disease*. 5th ed. New York: Garland Science, 2001. Print.
4. Mullin G, Swift KM, Lipski L et al. "Food Reactions: The Good, The Bad, and the Ugly." *Nutr Clin Pract*. Vol. 25.No. 2 (2010): 192-98.
5. Atkinson W, Sheldon TA, Shaath N et al. "Food elimination based on IgG antibodies in irritable bowel syndrome: a randomized controlled trial." *Gut*. Vol. 53 (2004): 1459-1464.
6. Drisko J, Bischoff B, Hall M et al. "Treating Irritable Bowel Syndrome with a Food Elimination Diet Followed by Food Challenge and Probiotics." *JACN*. Vol. 25.No. 6 (2006): 514-22.
7. Aydinlar EI, Dikmen PY, Tiftikci A et al. "IgG-Based Elimination Diet in Migraine Plus Irritable Bowel Syndrome." *Headache*. (2012): 1-12.
8. Zuo XL, Li YQ, Li YJ et al. "Alterations of food antigen-specific serum immunoglobulins G and E antibodies in patients with irritable bowel syndrome and functional dyspepsia." *Clin Exper Allergy*. Vol. 37 (2007): 823-30.
9. Kalliomaki, MA. "Food allergy and irritable bowel syndrome." *Curr Opin Gastroen*. Vol. 21 (2005): 708-711.
10. Mansueto P, D'Alcamo A, Seidta A, et al.. "Food allergy in irritable bowel syndrome: The case of non-celiac wheat sensitivity." *World J Gastroenterol*. Vol. 21 No.23 (2015):7089-7109.
11. Alpay K, Ertas M, Orhan EK et al. "Diet restriction in migraine, based on IgG against foods: A clinical double-blind, a randomized cross-over trial." *Cephalalgia* Vol. 30.No. 7 (2010): 829-37.
12. Arroyave-Hernandez CM, Pinto ME, Hernandez Montiel HL. "Food allergy mediated by IgG antibodies associated with migraine in adults." *Revista Alergia Mexico* Vol. 54.No. 5 (2007): 162-8.
13. Wilders-Truschnig M, Mangge M, Lieners, C et al. "IgG antibodies against food antigens are correlated with inflammation and intima media thickness in obese juveniles." *Exper Clin Endocrinol Diabetes* Vol. 116.No. 4 (2008): 241-45.
14. Lewis JE, Woolger JM, Mellilo A, et al. "Eliminating Immunologically-Reactive Foods from the Diet and its Effect on Body Composition and Quality of Life in Overweight Persons." *J Obes Weig Los Ther* Vol. 2.No. 1 (2012): 1-6.
15. Bentz S, Hausmann M, Piberger H et al. "Clinical relevance of IgG Antibodies against Food Antigens in Crohn's Disease: a Double-Blind Cross-Over Diet Intervention Study." *Digestion*. Vol. 81 (2010): 252-264.
16. Kim-Lee C, Suresh L, Ambrus JL. "Gastrointestinal disease in Sjogren's syndrome: related to food hypersensitivities." *SpringerPlus*. Vol. 4.No. 766 (2015): 1-5.
17. Salamati S, Martins C, Kulseng B. "Baker's yeast (*Saccharomyces cerevisiae*) antigen in obese and normal weight subjects." *Clin Obes*. Vol. 5.No. 1 (2015): 42-7.
18. Severance EG, Gressitt KL, Yang S et al. "Seroreactive marker for inflammatory bowel disease and associations with antibodies to dietary proteins in bipolar disorder." *Bipolar Disord*. Vol. 16.No. 3 (2014): 230-40.
19. Hardman G, Hart G. "Dietary advice based on food-specific IgG results." *Nutr Food Sci* Vol. 37.No. 1 (2007): 16-23.
20. Nanayakkara WS, Skidmore PM, O'Brien L et al. "Efficacy of the low FODMAP diet for treating irritable bowel syndrome: the evidence to date." *Clin Exper Gastroenterol*. Vol. 9 (2016): 131-42.
21. Schirone, M. "Histamine Food Poisoning." *Handb Exp Pharmacol*. (2016).
22. Buckley, RH. "Clinical Focus on Primary Immune Deficiencies: IgG subclass deficiency." Vol. 1.No. 3 (1998).
23. Onmus MY, Avcu EC, Saklamaz A. "The Effect of Elimination Diet on Weight and Metabolic Parameters of Overweight or Obese Patients Who Have Food Intolerance" *J Food Nutr Res*. Vol. 4.No.1 (2016):1-5.

## FOOD SENSITIVITIES ARE REAL

Food sensitivity is not a disease, but may play a role in causing disease or worsening certain symptoms. Food sensitivities begin with the immune system and eventually cause inflammation. Here's how:

- The immune system makes five major antibodies, which are known by different letters: G, E, A, M and D. The G type, called IgG, is the most common. Of all antibodies found in blood, 80% are IgG. Food sensitivities are an IgG antibody reaction.
- The reason IgG antibodies are produced to certain foods is not well understood, but allergists consider it "normal and natural".<sup>2</sup> In contrast, IgG antibodies produced to other non-food antigens may result in serious health conditions like Lupus, Farmer's lung, and serum sickness.<sup>3</sup>
- When an IgG antibody meets a molecule of its food antigen in the blood, it creates an antigen-antibody complex, also called an immune complex.
- Most IgG immune complexes can be safely removed by cells called macrophages.
- Having many IgG antibodies to a food that is eaten regularly leads to the formation of immune complexes. Having an excess of immune complexes may mean macrophages fail to remove some of the immune complexes. The immune complexes left behind deposit in tissue and trigger inflammation.<sup>2,3</sup> This is called Type III hypersensitivity.

IgG reactions, or Type III hypersensitivities, are well known in medicine, but there is some controversy as to whether immune complexes formed between IgG and food antigens can cause symptoms. Allergists agree that complexes to food are formed; but not all allergists agree that IgG antibody-food complexes have the potential to cause inflammation. There is, however, a growing body of evidence that suggests IgG food sensitivities do play a role in creating inflammation and contribute to symptoms of a variety of diseases.

## EFFECTS OF FOOD SENSITIVITIES

Food sensitivity is an evolving area of research and new studies on the role of IgG in food reactions are released every year. The following conditions have shown improvement in patient symptoms when IgG reactive foods were removed:



### IRRITABLE BOWEL SYNDROME

**STUDY #1:** In a 2005 study, 150 people suffering from irritable bowel syndrome (IBS) volunteered to find out whether food sensitivity testing could play a role in relieving IBS symptoms. After completing a food sensitivity test, patients were given a diet to follow. Some received the 'true' diet – based on their actual results, while others received a 'sham' diet, which did not eliminate any of the reactive foods. Neither the patients nor their doctors knew which diet the patient was following. Only after three months had passed did researchers and participants learn which diet was assigned to which patient. The researchers found that patients who followed the 'true' diet saw noticeable improvement in their IBS symptoms compared to the patients who had been assigned the 'sham' diet.<sup>5</sup>

**OTHER STUDIES:** More recent studies have also shown improvement in symptoms of irritable bowel syndrome when IgG reactive foods were removed from the diet of IBS sufferers.<sup>6,7,8,9,10</sup>



### MIGRAINE HEADACHES

Several small studies have shown that removing IgG reactive foods from the diet helps reduce the frequency of migraine headaches and decreases the need for headache relief medications.<sup>7,11,12</sup>



- Allergists know that making IgG antibodies to some foods is normal, but may not agree that IgG-food antigen immune complexes have the potential to cause inflammation.
- Food sensitivities develop slowly, so there is rarely an obvious link between eating a food and the appearance of symptoms. This makes IgG food reactions very different from food allergies, where reactions are usually seen right away. To some dietitians and allergists, it can seem like patients are removing foods unnecessarily, which is why it is important to work with health professionals like naturopathic doctors to ensure foods are removed appropriately and that the right nutrients are included in the diet.

---

## SUMMARY

Food sensitivities are very different from food allergies. The symptoms associated with food sensitivities develop slowly over time as IgG antibody-food antigen immune complexes deposit in various parts of the body and trigger inflammatory reactions. Depending on where the immune complexes deposit, inflammation can contribute to a variety of different health conditions.

Numerous studies in peer-reviewed journals have shown the health benefits of removing IgG reactive foods, particularly for Irritable Bowel Syndrome,<sup>6,7,8,9,10</sup> migraine headaches,<sup>11,12</sup> and weight management.<sup>13,14,23</sup> There is good evidence that most patients experience improvement in symptoms when IgG reactive foods are removed from the diet.<sup>19</sup>

Rocky Mountain Analytical remains committed to meeting the needs of healthcare professionals and patients for an accredited, reputable, industry-leading Canadian laboratory for food sensitivity testing.

## FOOD SENSITIVITY TESTING IS MISUNDERSTOOD

Food sensitivity is an immune process that leads to inflammation, which may contribute to symptoms of disease. However, food sensitivity is not a disease. As a result, some healthcare professionals may be unclear on the purpose of food sensitivity testing. Further misunderstandings may arise from the following:

- IgG food reactions are sometimes confused with IgE food allergies. The term allergy is used exclusively for IgE food reactions, which are typically diagnosed by allergy specialists. Referring to food sensitivity as an IgG food allergy is incorrect, since no such condition exists. Only when someone has an IgE reaction to foods should the term food allergy be used. An IgG reaction to food should be called food sensitivity.
- One subtype of IgG antibodies helps protect against IgE food allergies. As a consequence, many allergists see IgG reactions as something positive, because this one IgG subtype may help protect against serious food allergies. However, this subtype behaves differently than the other IgG antibody subtypes. The majority of IgG antibodies (95%) form complexes with antigens (like food) that trigger inflammation, and provide no benefit against IgE food reactions.<sup>22</sup>



## WEIGHT



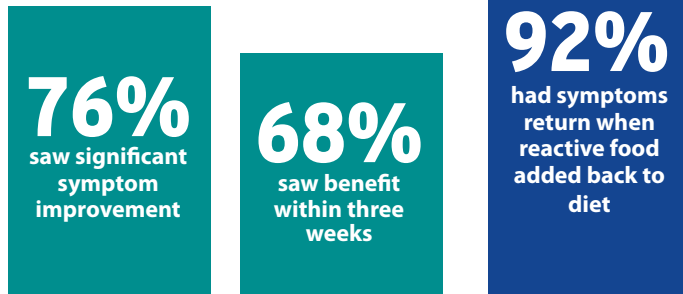
**STUDY #1:** In 2008, diabetes researchers found that obese children had more IgG antibodies to foods than children of normal weight. Obese children also had more C-reactive protein (CRP), which is a good indicator of inflammation in the body. In other words, they found a strong connection between IgG food antibodies and inflammation, which fits with what we know about Type III hypersensitivity reactions like food sensitivities.<sup>13</sup>

**STUDY #2:** Over one hundred men and women who wanted to lose weight participated in an IgG food sensitivity study. After receiving their IgG food sensitivity test results, the participants voluntarily stopped eating their reactive foods. They answered a series of health questions at the 30, 60 and 90 day marks, and measurements (weight, hip and waist size) were taken. The results showed that individuals who stopped eating IgG reactive foods for 90 days lost an average of 1 pound per week, 3 inches from the hips, and 1.5 inches from the waist, plus they felt better physically, mentally, and emotionally. Improvement in social functioning and general health was also seen. The foods most commonly removed were: Brewer's yeast, Baker's yeast, wheat, cow's milk and eggs.<sup>14</sup>

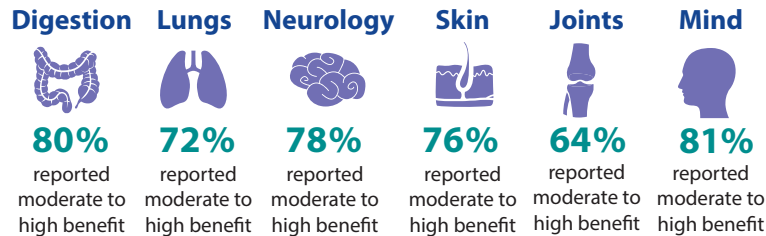
## LARGE STUDY SHOWS FOOD SENSITIVITY TEST RESULTS CAN LEAD TO SYMPTOM RELIEF

The British Allergy Foundation (known as Allergy UK) commissioned a study of patients who had recently received an IgG food sensitivity test (within the previous 3 months). The goal of the study was to find out whether removing reactive foods from the diet improved patients' symptoms. The results were published in Nutrition & Food Science in 2007.<sup>19</sup> Of the over 5000 patients included, 70% rigorously followed the results and eliminated all their reactive foods.

Patients who successfully removed reactive foods from their diets saw improvement in a variety of symptoms, most within 3 weeks. Symptom improvement was shown to be directly related to the removal of the reactive foods as symptoms returned when the reactive foods were reintroduced into the diet.



Symptom relief varied by body system, with digestive symptoms like irritable bowel syndrome and psychological symptoms like anxiety and depression, showing the greatest improvement when reactive foods were removed.



(Source: Hardman G, Hart G. NFS. 2007;37(1):16-23)

This study showed that patients who removed reactive foods from their diets experienced noticeable improvement in symptoms. The fact that symptoms returned when the reactive foods were reintroduced into the diet in is further evidence that these foods contributed to symptoms. The authors conclude that food sensitivity testing is a useful tool for identifying the cause of certain symptoms.

Published research also shows the benefits of removing IgG-reactive foods for several other health conditions. They include: functional dyspepsia (indigestion)<sup>8</sup>, Crohn's disease (a serious type of inflammatory bowel disease),<sup>15</sup> and Sjögren's syndrome,<sup>16</sup> an immune disease.

Antibodies to yeast (Brewer's yeast, Baker's yeast, candida) may also play a role in inflammation and disease.<sup>17</sup> And, high levels of IgG antibodies to foods have been found in individuals with bipolar disorder<sup>18</sup> and in obese children.<sup>13</sup>

## FOOD REACTIONS MAY HAVE MANY DIFFERENT CAUSES

Food sensitivities and food allergies are immune responses to food, but not all reactions to food are caused by the immune system. A good example is lactose intolerance, which causes bloating and discomfort after drinking milk or eating dairy foods. Lactose intolerance is due to a lack of lactase, the enzyme that breaks down lactose sugar in milk, not an immune reaction.

Digestive symptoms may occur when poorly digested carbohydrates (foods called FODMAPs) ferment in the gut.<sup>20</sup> Fruit, beans, and wheat are examples of foods that are FODMAPs.

And finally, certain foods have naturally occurring chemicals that some people react to. For example, some foods are high in histamine, a chemical that promotes inflammation. People who are highly sensitive to histamine are more likely to experience problems after eating these foods.<sup>21</sup>

Therefore, when a normal IgG result is reported for a food that usually causes someone symptoms, it is unlikely he or she has a food sensitivity. It could be an IgE food allergy, which does not always show elevated IgG levels; or it could be a non-immune reaction like an intolerance, FODMAP, or reaction to naturally occurring chemicals as described above.